



# How to get to



By airplane, train, bus or car

All maps are © OpenStreetMap contributors, 2016, used in accordance to the CC BY-SA 2.0 license.

<http://comsys.rwth-aachen.de/>

Aachen / Getting Here, September 2017



# COMSYS/Aachen on the Map



# Visiting Address

## COMSYS location

- ▶ RWTH Computer Science Center (Informatikzentrum)
- ▶ Building E3 (Erweiterungsgebäude 3)
- ▶ Enter the building here: ①
- ▶ And go upstairs one floor to “Erdgeschoss” (ground floor) (elevator is available) and enter COMSYS here: ②

## Arrival by car:

- ▶ Enter via the parking lot across from:  
③ Mies-van-der-Rohe-Straße 35, 52074 Aachen

• **Train: Nearest station is “Aachen-West” (see Slide 9) or “Aachen Hbf” (main station)**

• **Bus: Stop “Halifaxstraße” or “Hainbuchenstraße” (see Slide 10)**



By car from highway A4  
→ exit 2, AC-Laurensberg  
→ follow RWTH Höm



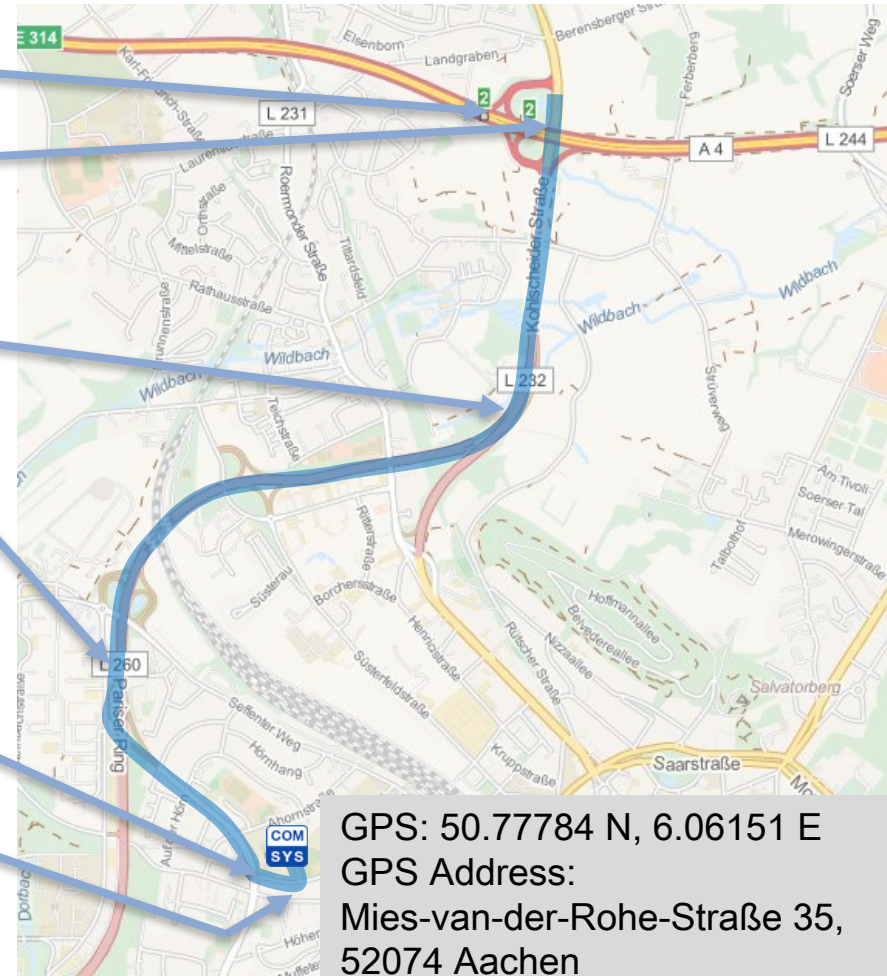
GPS: 50.77784 N, 6.06151 E  
GPS Address: Mies-van-der-Rohe-Straße 35,  
52074 Aachen  
**Attention: You need a parking ticket from us!  
Ask the COMSYS office for a free ticket.**

# Arrival by Car

- **Directions**

- ▶ Leave A4 (direction Antwerpen) at exit 2: Aachen-Laurensberg
- ▶ Turn right towards Laurensberg/Klinikum/RWTH
- ▶ Keep right unto Toledoring towards Klinikum / RWTH Hörn
- ▶ Take second ramp after tunnel towards RWTH Hörn (not RWTH Melaten)
- ▶ Pass two traffic lights, then next left into Mies-van-der Rohe-Str.
- ▶ Turn next left into parking lot of Informatikzentrum
- ▶ Drive towards the end of the parking lot
- ▶ You arrive at COMSYS (on the left)

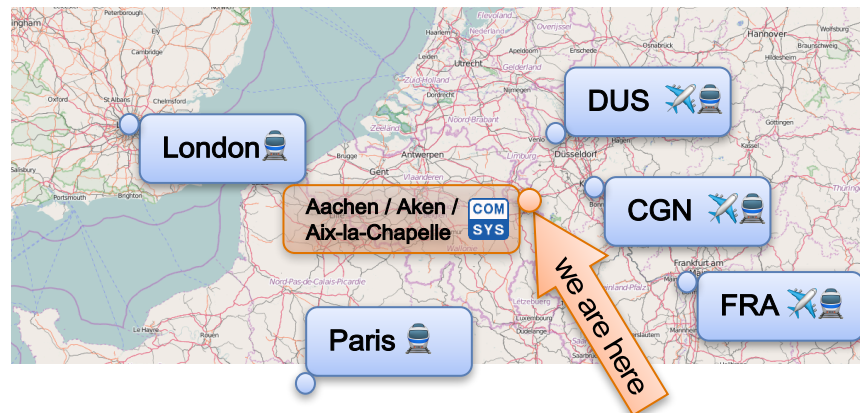
- **Attention:**  
**Parking ticket required. Strict enforcement.**  
**We provide tickets in our office.**



GPS: 50.77784 N, 6.06151 E  
GPS Address:  
Mies-van-der-Rohe-Straße 35,  
52074 Aachen

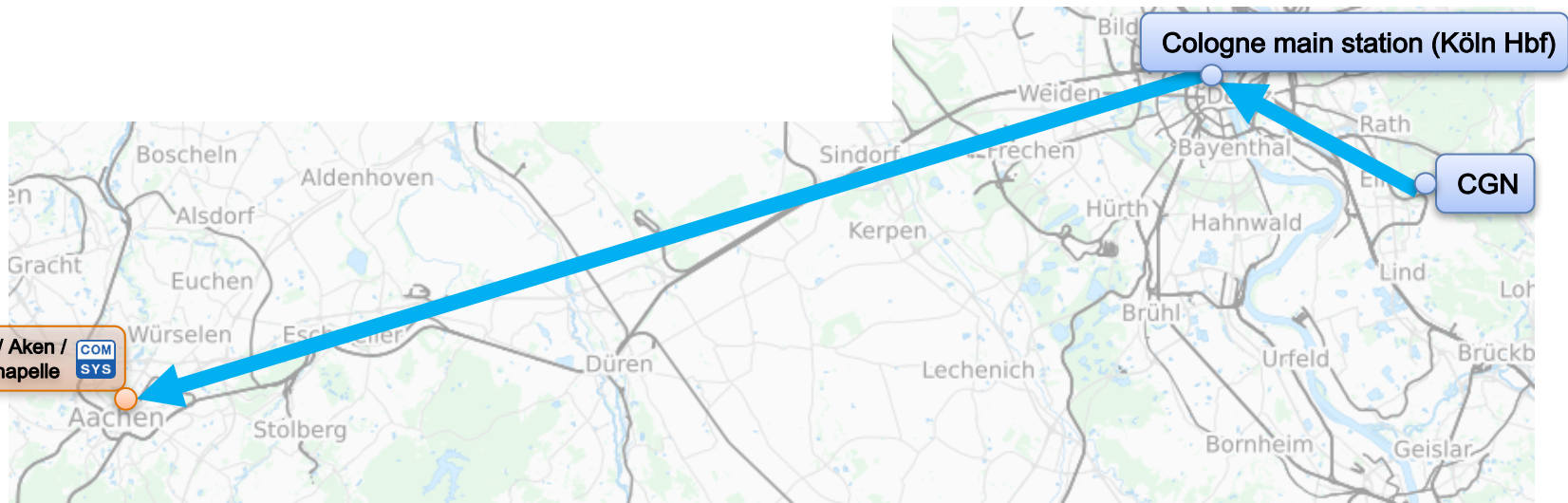
# International Arrival

- **We recommend the following airports:**
  - ▶ Cologne/Bonn International (CGN): about 1.25 hours by train from Aachen
    - CGN serves most European destinations
  - ▶ Düsseldorf International (DUS): about 1.5 hours from Aachen
    - DUS serves most European and many transatlantic and Asian destinations
  - ▶ Frankfurt International (FRA): about 2 hours from Aachen
    - FRA serves most destinations and carriers worldwide
- **International Train Connections**
  - ▶ From London via Brussels: <https://www.b-europe.com/>
  - ▶ Directly from Paris: <https://www.thalys.com/>
- **Trains/buses in Germany: <http://bahn.de/en>**



# Cologne Airport (CGN) to Aachen

- **Take the local train to Cologne Main Station (Köln Hbf)**
  - ▶ Runs every 15 to 30 mins
- **Take the regional train to Aachen Main Station (Aachen Hbf)**
  - ▶ Runs every half hour, from platforms 8 or 9
- **Take bus or taxi to COMSYS (see Slide 9)**
- **Total travel time: ~1:30h**
- **Fare: ~ 22 €**



# Düsseldorf Airport (DUS) to Aachen

- **Direct train to Aachen Main Station (Aachen Hbf)**

- ▶ Take sky train from terminal to DB airport train station
- ▶ Take regional train to Aachen Hbf
  - Runs at least twice every hour

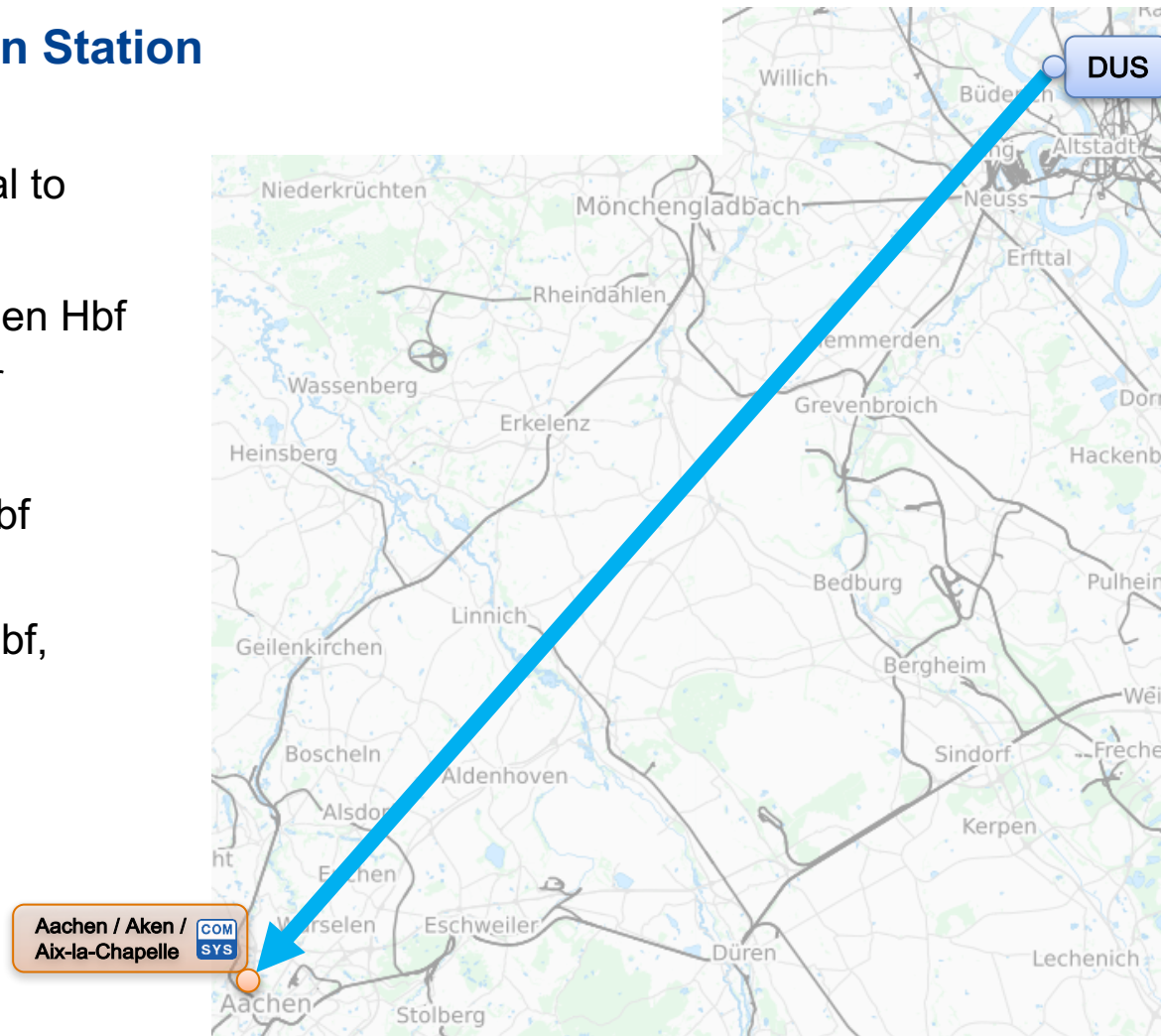
- **Alternative:**

- ▶ Local train to Düsseldorf Hbf
  - Runs every 20 minutes
- ▶ Regional train to Aachen Hbf, Stop: Aachen-West

- **Total travel time: ~1:30h**

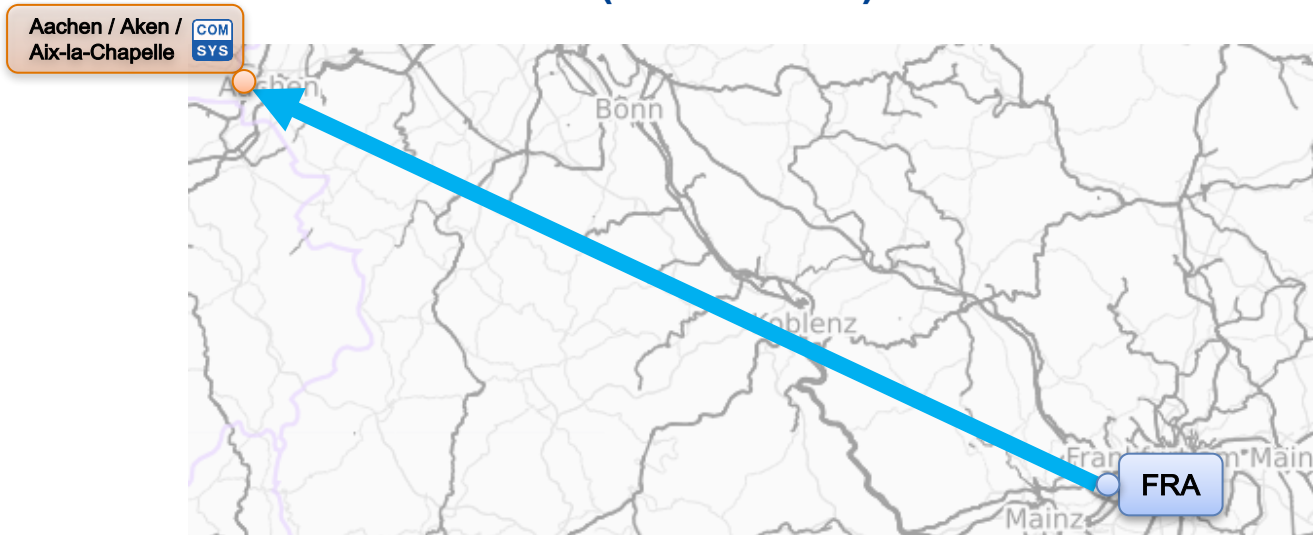
- **Fare: ~ 22 €**

- **Take bus or taxi to COMSYS (see Slide 9)**



# Frankfurt International (FRA) to Aachen

- **Direct train to Aachen Main Station (Aachen Hbf)**
  - ▶ ICE International in direction to Brussels Central
  - ▶ FRA → AC: 06:43h, 8:31h, 10:43h, 14:43h, 16:43h, 18:43h
  - ▶ AC → FRA: 07:40h, 09:39h, 11:39h, 15:39h, 17:39h, 19:39h
  - ▶ Total travel time to COMSYS: ~2:00h
- **Alternative: Change trains in Cologne Main Station**
- **Fare: ~ 80 €**
- **Take bus or taxi to COMSYS (see Slide 9)**





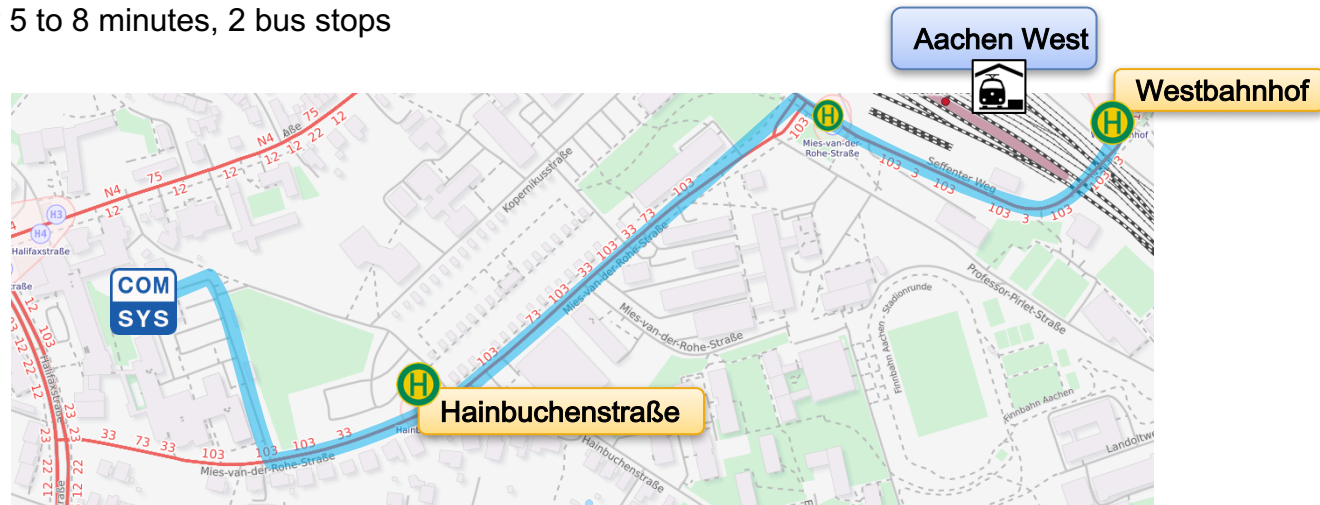
# Arriving via train

- **Taxi from Aachen Main Station:**

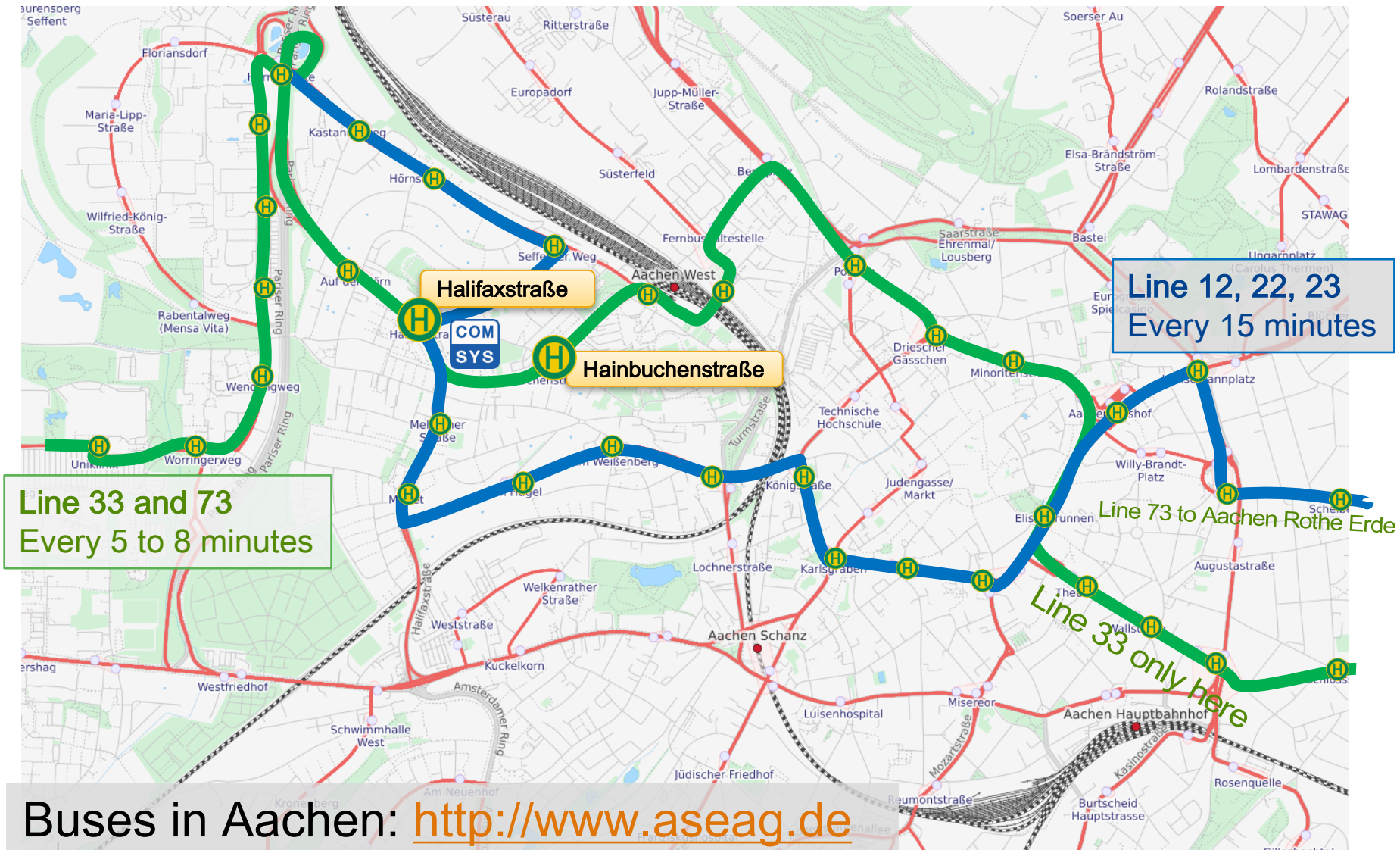
- ▶ Taxi stand on the right side coming out of the main exit
- ▶ Contact: +49 241 66666, Fare: ~15 €

- **Public Transportation:**

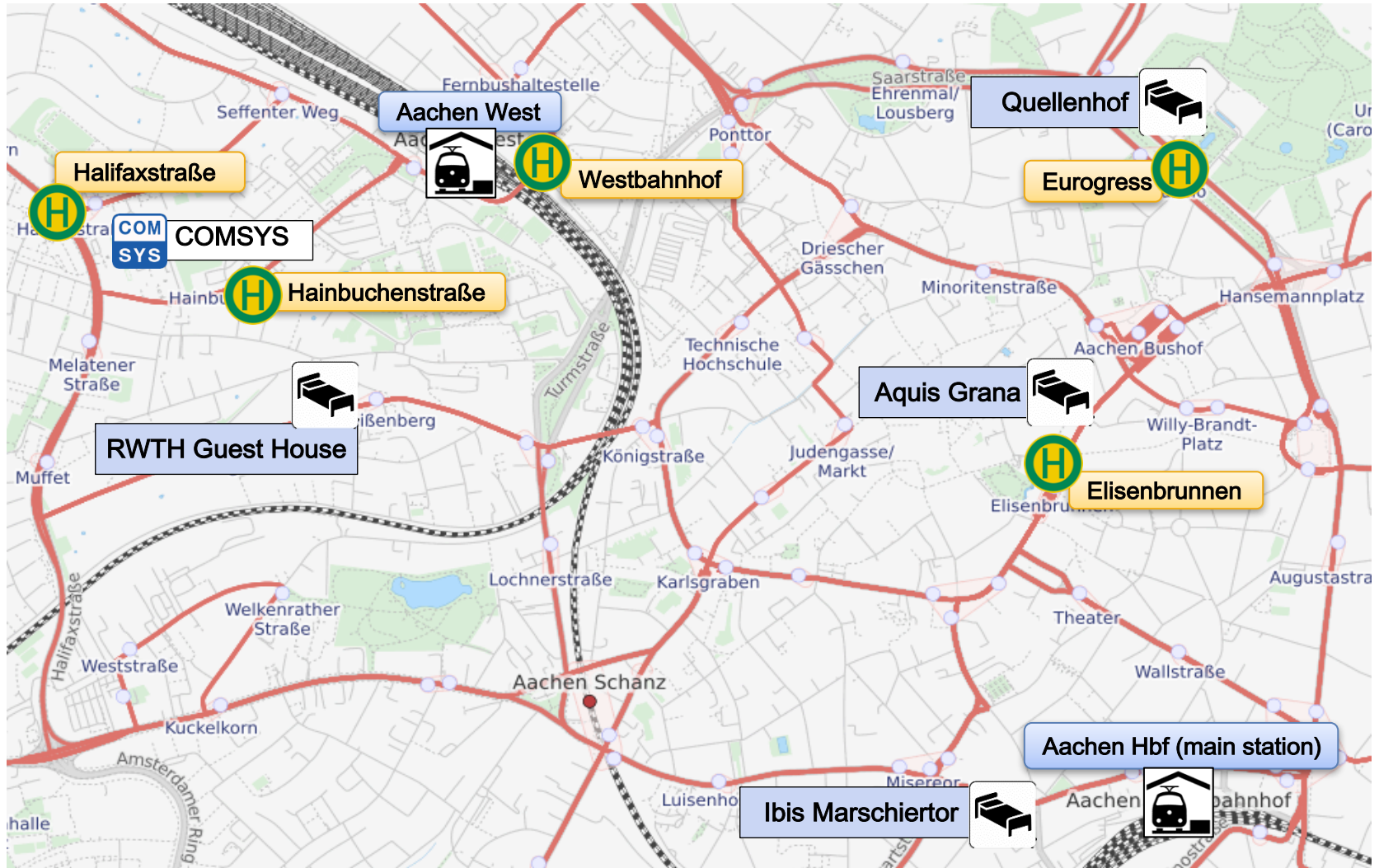
- ▶ Train: Aachen Main Station (Aachen Hbf) to **Aachen West**
  - Direct **Bus 3A** runs every hour
  - Bus with stopover every 30 minutes: **Bus 13A + Bus 33**
  - Local trains **RB20** (direction Stolberg or Alsdorf), **RB33** (direction Heinsberg) or **RE4** (direction Dortmund)
    - Run every half an hour or every hour
- ▶ Aachen West to COMSYS
  - 15 minutes by foot
  - or, **Bus 33** or **Bus 73** from **Westbahnhof** to **Hainbuchenstraße** every 5 to 8 minutes, 2 bus stops



# Buses to COMSYS



# Accommodation Overview



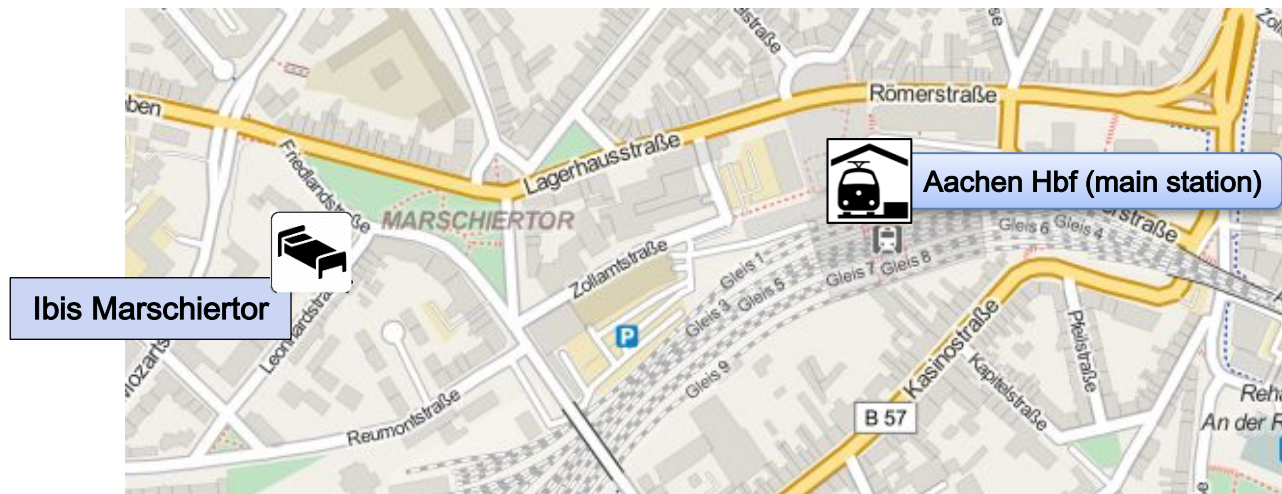
# Accommodation: RWTH Guest House

- Excellent accommodation through the university
- Contact: +49 241 80 24074,  
<http://www.rwth-aachen.de/cms/root/Die-RWTH/Kontakt-Lageplaene/Raumverwaltung/~bdst/Gaestehauser/>
- Nightly Rate: 42 € (must be reserved through us)
- In easy walking distance of COMSYS (10 mins)



# Accommodation: Hotel Ibis am Marschierort

- In walking distance from Aachen Main station
- Contact: +49 241 47880, <http://www.ibis.com>
- Nightly Rate: ~ 55-70 €
- To COMSYS:
  - ▶ Taxi: +49 241 66666 (10 mins, ~15 €)
  - ▶ Public transportation:  
Train to Aachen West,  
then walking or Bus 33 or Bus 73 (Slide 9)



# Accommodation: Hotel Quellenhof

- One of the best hotels in Aachen
- Contact: +49 241 9132946, <http://www.pullmanhotels.com/Aachen>
- Nightly Rate: ~ 125-170€
- To COMSYS:
  - ▶ Taxi: +49 241 66666 (10 mins, ~10 €)
  - ▶ Public transportation:  
Bus 3A from Eurogress to Westbahnhof,  
then Bus 33 or Bus 73 to Hainbuchenstraße



# Accommodation: Hotel Aquis Grana

- Located right in the town center
- Contact: +49 241 4430, <http://www.hotel-aquis-grana.de/>
- Nightly Rate: ~ 70-100 €
- To COMSYS:
  - ▶ Taxi: +49 241 66666 (10 mins, ~10 €)
  - ▶ Public transportation:  
Bus 12 or Bus 22 from Eisenbrunnen to Halifaxstraße

